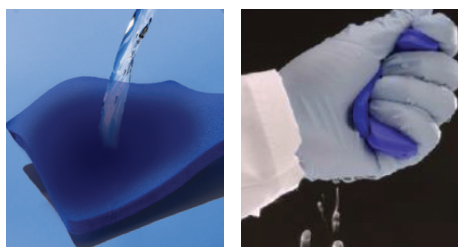
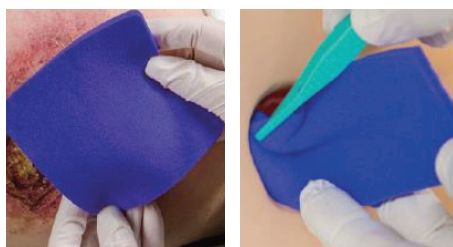


Step 1. Hydrate and Squeeze



- Hydrate with sterile saline or sterile water for approximately 60 seconds.
- Squeeze out excess fluid.

Step 2. Apply



- Lightly pack the wound with dressing within the wound margins.

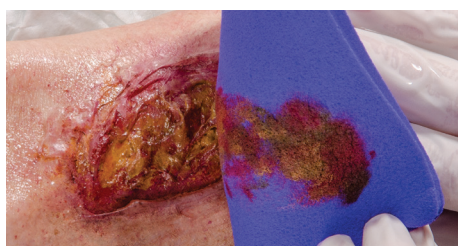
NOTE: If rolled wound edges are present, overlap the wound edge by 1/2 centimeter.

Step 3. Cover



- Cover foam with secondary dressing, based on exudate level to keep the foam moist. Refer to chart below.

Step 4. Dressing Changes



- Change the dressing every 3 days or per the MD orders.

NOTE: If the dressing turns white, continue daily dressing changes until blue color is retained.

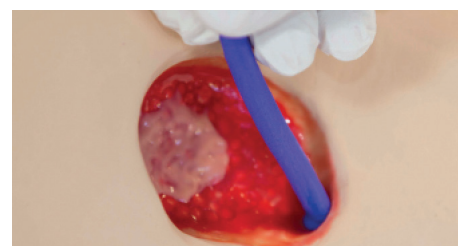
Moisture Balance



Refer to secondary dressing guide below
As with many wound care dressings, moisture balance is key. If the dressing is dry, thoroughly re-moisten with sterile saline or sterile water, then gently remove the dressing.




The goal is to keep Hydrofera Blue CLASSIC® moist.

Tunneling Dressing



- Moisten the tip with sterile saline or sterile water to aid with ease of insertion.
- Gently insert the moistened end of the dressing (softened) into the wound tunnel or sinus. If necessary, you may use a cotton-tip applicator to help guide it into place.
- After insertion, add drops of sterile saline or sterile water to the end of the dressing until moist.
- Trim the dressing as needed.
- Cover with a secondary dressing.

Secondary Dressing Selection Guide

LIGHT EXUDATE			MODERATE EXUDATE		HEAVY EXUDATE	
 To maintain light moisture balance					 To maintain moisture balance and avoid saturation, use a dressing that will absorb excess exudate	
Less absorptive dressing ←					→ More absorptive dressing	
Transparent Film			Gauze		Superabsorber	
			Absorbent Pad			