

LoFric Elle – female users

LoFric® Elle™ single use, hydrophilic urinary catheter, ready to use.

For intermittent urinary catheterization, for female adults.

LoFric catheters are for prescription use only.

Ensure to follow the catheterization procedure advice and training given to you by your Healthcare Professional before use.

Please refer to instructions for use included in the package for important information and complete instructions.

Contact your prescriber if you experience difficulties.

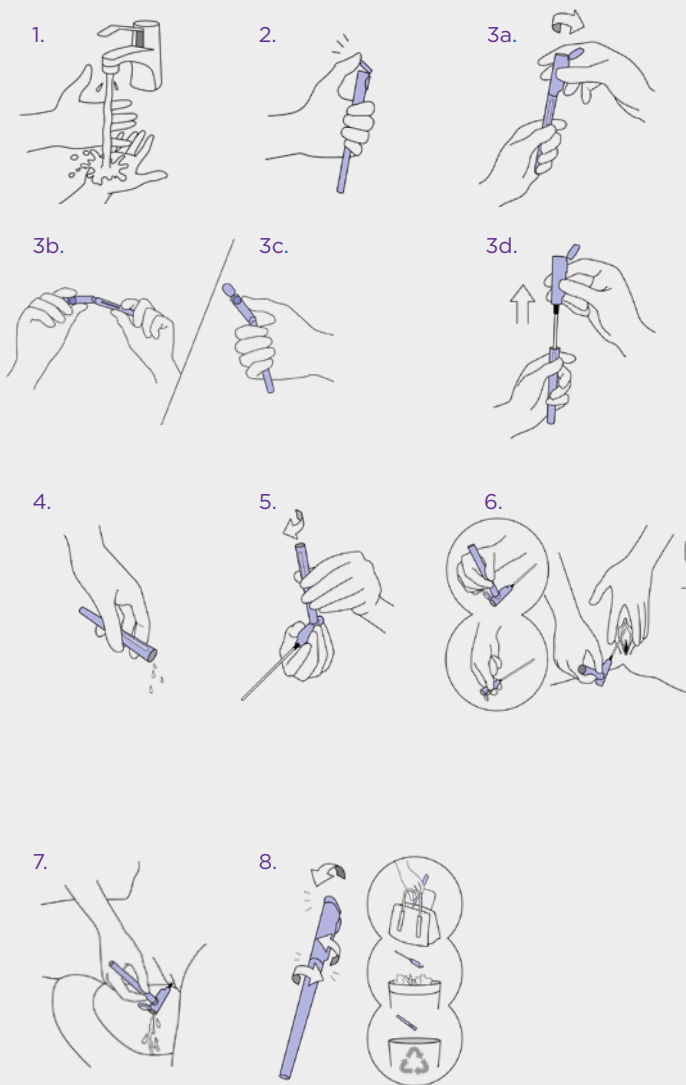
Instructions for use

1. Wash your hands thoroughly with soap and water.
2. Break the upper sterile barrier lid.
3. Break the lower sterile barrier by holding the container, and
 - a) Twist or gently bend the upper part (image b or c).
 - d) Hold the product vertically and pull the catheter straight up out of the container.

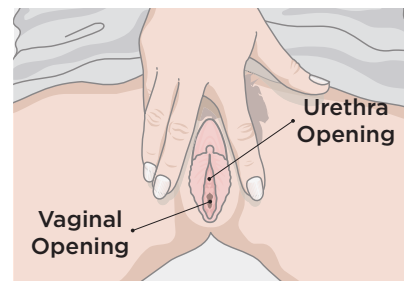
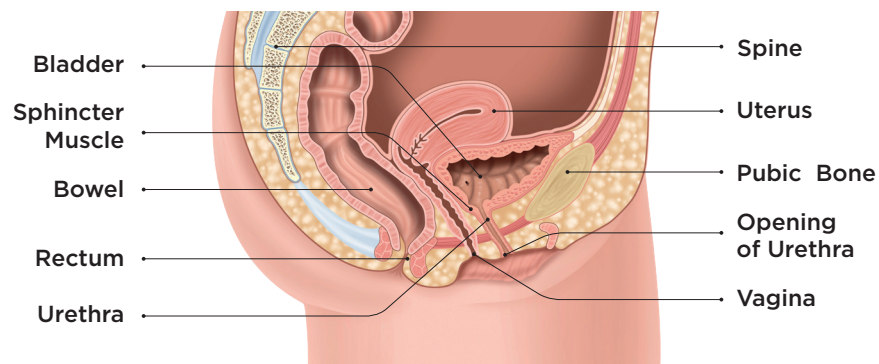
4. Empty the remaining fluid from the container (in the toilet or sink).
5. OPTION: By attaching the container to the upper part, it can be used as a handle.
6. Tilt your pelvis forward, spread the labia, pull gently upwards, the urethra is located just above the vaginal opening. With the other hand, insert the catheter slowly into your urethral opening, until urine starts to flow, insert slightly more to ensure both eyelets are inside the bladder.

7. When the urine flow slows to a drip, withdraw the catheter slowly. If urine starts to flow again, stop the withdrawal process and wait until the urine flow stops, to ensure complete bladder emptying.

8. Put the catheter back inside the container. Dispose, or carry it in your bag until disposal.
Please note! The container is recyclable.



A Cross-Section of the Female Anatomy



The use of a mirror can help you find the urethra. Contact us for a free LoFric Mirror.



wellspect.us

 Manufacturer **Rx Only**

Wellspect HealthCare, 1235 Friendship Road, Suite 205, Braselton, GA. Phone: (877) 456-5742