

Instructions

LoFric® Origo™ catheters are Single Use Hydrophilic Urinary Catheters with a Sterile Salt Solution Sachet.

Indications for use: Intermittent Urinary Catheterization

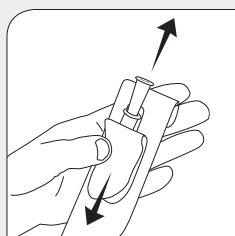
Important information: Ensure proper training on the catheterization procedure is provided to user.

This is a single use product. Once used, the surface coating will deteriorate and the catheter will no longer be sterile. Use only the salt solution included to wet the catheter.

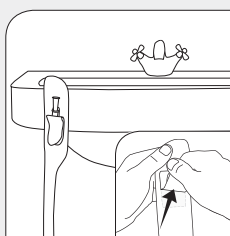
Start by washing your hands with soap and water.



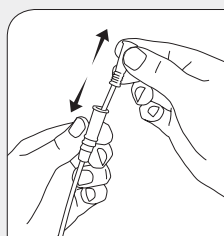
1. Squeeze to release the salt solution and the catheter is ready to use.



2. Pull the tab down to open.

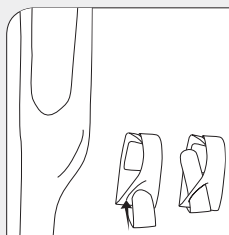


3. Use the adhesive tab on the reverse side to hang the product, if necessary.



4. Pull and adjust the Insertion Grip situated below the connector to control insertion without touching the catheter tube.

Options



A. Fold the package and use the slit to keep the catheter folded.

The sachet contains a sterile salt solution that should only be used for soaking the catheter.

LoFric Origo is single use only. LoFric Origo must not be placed on paper or cloth as these materials can absorb the catheter's liquid coating. Once used, the unique surface coating will deteriorate and the catheter will no longer be sterile. After use, dispose of the catheter appropriately (state and local regulations may vary).

Not manufactured with PVC, phthalates and natural rubber latex.

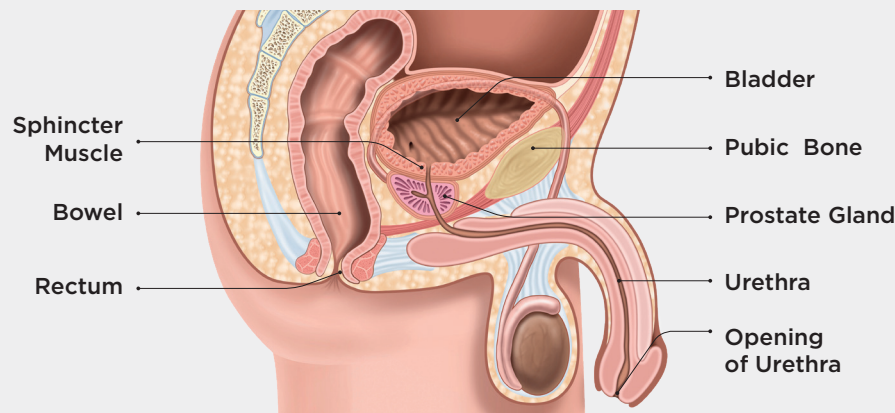


wellspect.us

Wellspect HealthCare, 880 Apollo Street, Suite 200, El Segundo, CA 90245
Contact us at: 1-877-456-3742, info-lofric-usa@wellspect.com or www.wellspect.us

LoFric® Origo™

A Cross-Section of the Male Anatomy



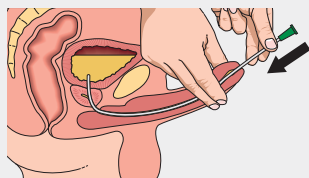
In men, the urethra is 6 to 8 inches long and shaped like the letter "S." Inserting the catheter becomes much easier if you lift your penis up towards the stomach – this way the S is straightened out.

Instructions for Catheterizing

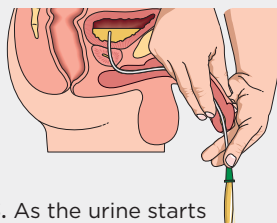


1. Wash your hands and prepare the catheter.

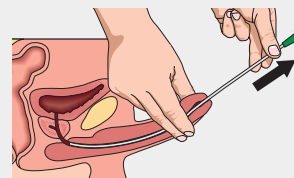
Sit or stand as relaxed as possible. Hold the penis up and clean in a circular motion with a moist towelette or soap and water. Start at urethral opening and work your way outward.



2. Hold the penis up towards your stomach. If you are not circumcised, pull the foreskin back and then hold the penis up toward your stomach. Do not squeeze too hard. With the other hand, insert the catheter slowly until urine starts to flow, then insert slightly more (about 1/2 - 1 inch) to ensure both eyelets are in the bladder.



3. As the urine starts to flow through the catheter, lower your penis back to your normal position.



4. When the flow stops, hold the penis up towards the stomach and withdraw the catheter. If urine starts to flow again, stop the withdrawal process and wait until the urine flow stops to ensure complete bladder emptying.

Dispose of the catheter.

