



Intended use

SimPro™ Now is intended for intermittent emptying of the urinary bladder. All SimPro™ hydrophilic urinary catheters are for single use only.

Sterilisation and shelf life

All catheters are sterilized using ethylene oxide. Information about the use-by date is printed on the package.

Package

30 catheters per carton and 4 cartons per shipping box.

Material composition

Hydrophilic surface coating: Polyvinyl pyrrolidone (PVP) and sodium chloride (NaCl).

Catheter: Polyvinyl chloride, medical PVC contains DEHP (Nelaton and Tiemann).

Water pocket: PET/Aluminum /LDPE and sterile water.

Item package: Polyethylene (PE) film, medical grade paper.

Product Range

Reference	Type	Length	Size
5130800	SimPro™ Now Female	8 in	08FR
5131000	SimPro™ Now Female	8 in	10FR
5131200	SimPro™ Now Female	8 in	12FR
5131400	SimPro™ Now Female	8 in	14FR
5131600	SimPro™ Now Female	8 in	16FR
5120800	SimPro™ Now Pediatric	12 in	08FR
5121000	SimPro™ Now Pediatric	12 in	10FR
5100800	SimPro™ Now Male	16 in	08FR
5101000	SimPro™ Now Male	16 in	10FR
5101200	SimPro™ Now Male	16 in	12FR
5101400	SimPro™ Now Male	16 in	14FR
5101600	SimPro™ Now Male	16 in	16FR
5101800	SimPro™ Now Male	16 in	18FR
5151200	SimPro™ Now Coudé	16 in	12FR
5151400	SimPro™ Now Coudé	16 in	14FR
5151600	SimPro™ Now Coudé	16 in	16FR
5151800	SimPro™ Now Coudé	16 in	18FR

Instructions

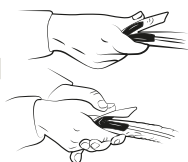
1



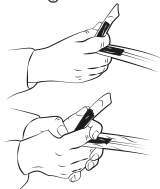
1. Wash your hands before catheterization.

2

a



b

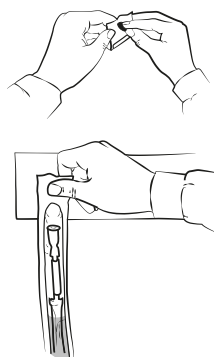


2. Break the water sachet by using one of the illustrated methods:
a. by folding and squeezing (make sure not to fold over more than half the length of the water sachet to avoid water going the wrong way).

b. by placing your index finger on the water sachet, approximately half way down. Then use your thumb to fold the sachet around your index finger and squeeze.

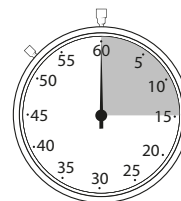
Then let the water run down into the package.

3



3. You can stick the package onto any dry surface using the self-adhesive tape on the package.

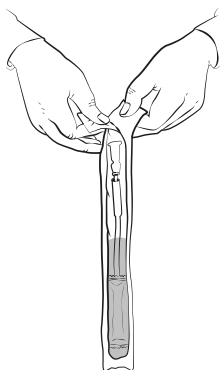
4



15+sec

4. Make sure that the catheter is soaked in water for at least 15 seconds, and get ready for catheterization

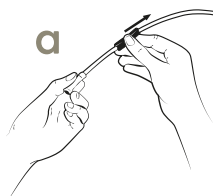
5



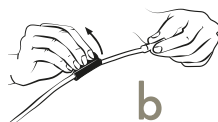
5. Open the package by peeling the tabs on the connector side.

6

a



b



6. (a) By using the blue handling strip to hold on to, you can perform catheterization easily without ever touching the catheter

(b) If needed, handling strip can be removed before or during catheterization.